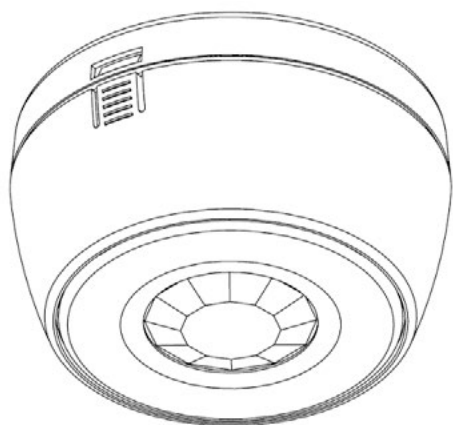


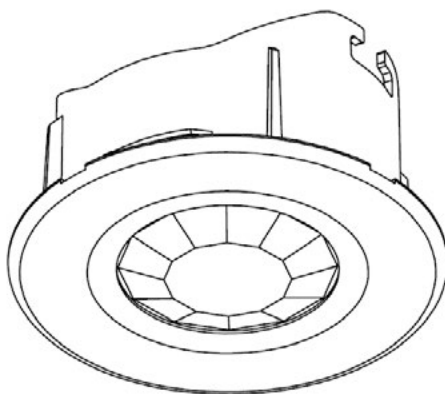
Datasheet PD100/MD100

EAE KNX Presence/Motion Detector

All you need is EAE

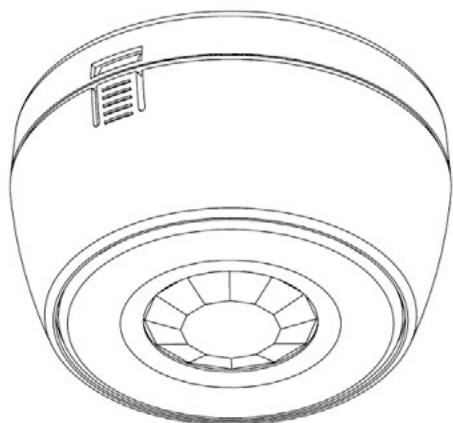


XD100 Surface Mount

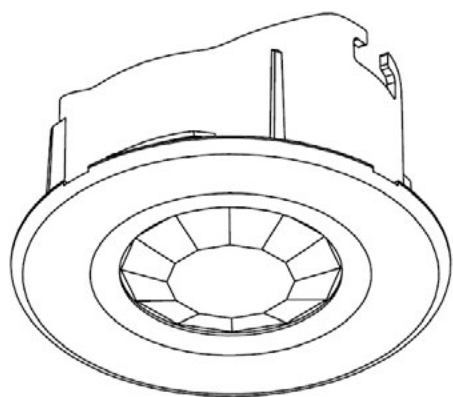


XD100 Flush Mount

General Description



XD100 Surface Mount



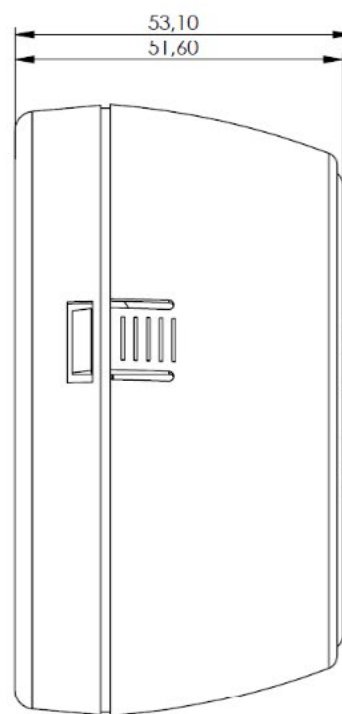
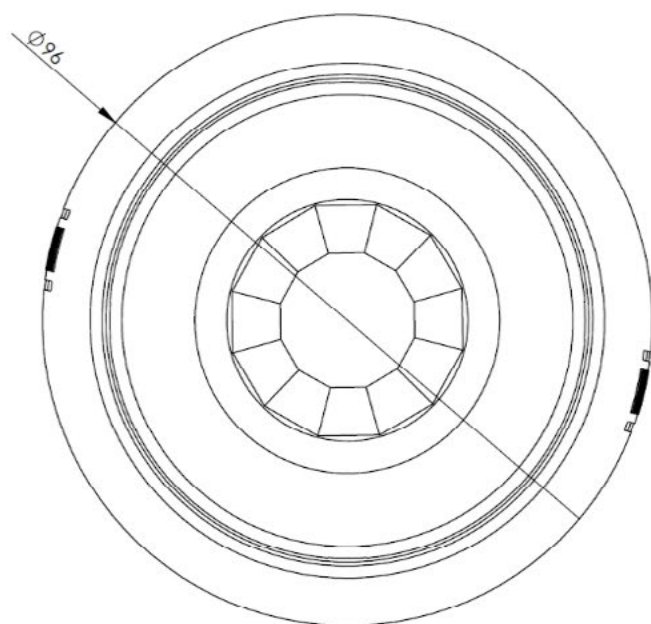
XD100 Flush Mount

- XD100 KNX Presence Detector is ideal for interior rooms such as medium to large-size offices, corridors, classrooms, conference and meeting rooms, parking buildings, warehouses and sport halls. Detector is available in two models; PD100 Presence Detector and MD100 Motion Detector with flush mounted and surface mounted versions.
- Constant light function can be applied in dependence of presence information thanks to integrated brightness sensor and movement sensor. XD100 regulates the ambient brightness to a defined brightness value.
- Lighting can be set to different brightness levels with corridor function based on occasions such as "motion detection, after movement, no action". Stay-on time can be changed by the end user.
- Air-conditioning and ventilation systems can be controlled by independent HVAC channel.
- Presence information can be sent to presence monitoring applications by independent presence channel.
- The EAE KNX XD100 (PD100 and MD100) can either be used as a standalone device or master-slave device (parallel operation with other sensors) according to the necessity of the project.
- XD100 enables fully-automatic and semi-automatic lighting control.
- Test and calibration mode allows for easy installation.
- The device does not require an additional power supply.

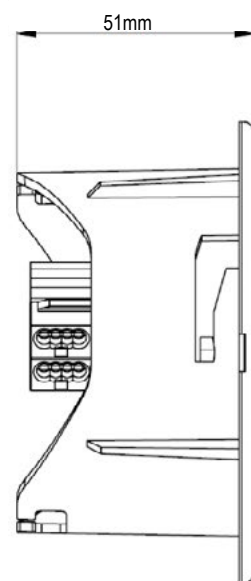
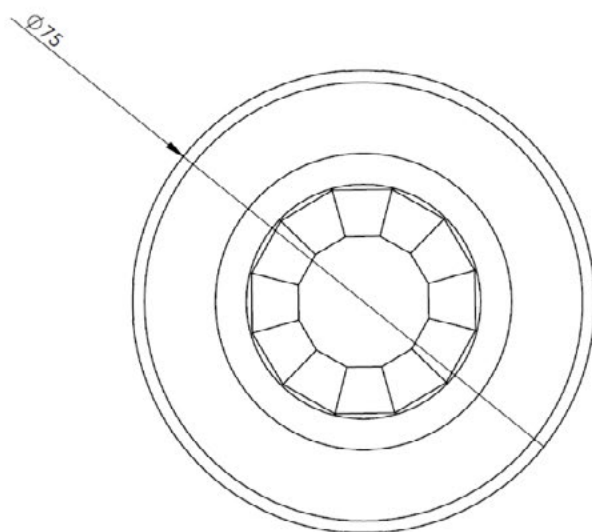
Technical Data

Type of protection	IP20 IP 44 (optional for Surface series only)	EN 60529
Safety class	II	EN 61140
Power supply :	Voltage	21V... 30V DC, KNX line
	Current consumption	< 10 mA
Application Area		Interior rooms
Sensor Type		Passive infrared
Installation	Location	Ceiling
	Recommended height	2,5m - 5m
Detection	PD100 (at height of 2,5 m)	Seated person 6 m Walking person 7 m
	PD100 (at height of 3 m)	Seated person 6.5 m Walking person 8 m
	MD100 (at height of 2.5 m)	Walking person 9 m
	MD100 (at height of 3 m)	Walking person 11 m
	MD100 (at height of 5.5 m)	Walking person 18 m
	Area	64 m ²
	Angle	360°
	Light level	1 – 1000 lux1
Additional channels		Brightness, presence channel, HVAC channel
Parallel operation		Master/Master, Slave/Master
Operating elements	LED (red) and button	For physical address
Temperature range	Ambient	-5° C + 45° C
	Storage	-25° C + 55° C
	Transport	-25° C + 70° C
Dimensions		42.5 x 42,5 x 12 mm
Weight	0.06 kg	
Box	Plastic, polycarbonate, color white	
CE	In accordance with the EMC guideline and low voltage	
Application program	Communications objects	Communications objects
	44	254

Scale Drawings



Drawing 1: XD100 Surface Mount



Drawing 2: XD100 Flush Mount